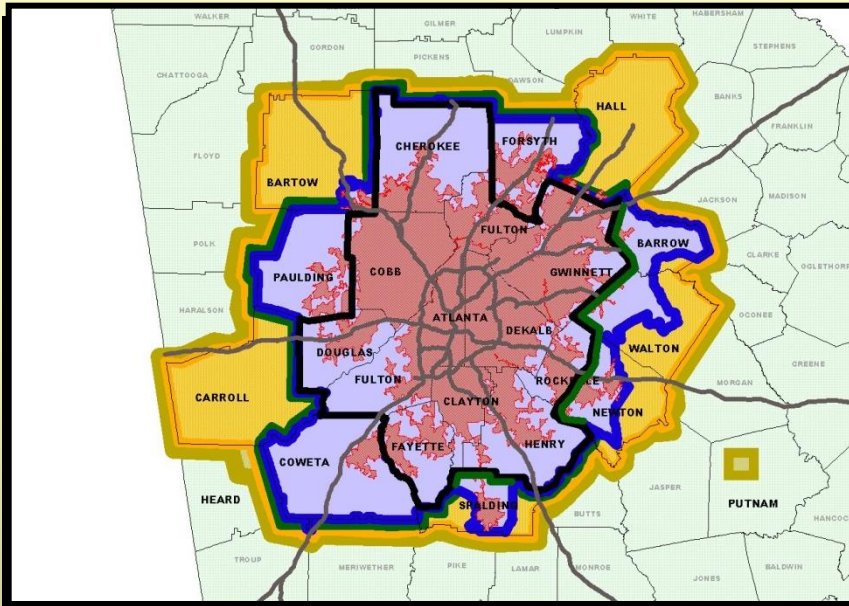


What is ARC's planning boundary?



This may sound like an easy question to answer, but it's really very complex. ARC currently has varying levels of planning responsibilities for four geographic areas. Refer to the map to the left and the matrix below to learn what counties are included in each of these planning boundaries and how ARC addresses each area in the transportation planning and air quality conformity processes.

Updated 1/27/10

Boundary Color					
Boundary Name	Regional Commission (RC)	<i>Previous</i> Ozone Non-Attainment Area (1 hour standard)	Metropolitan Planning Organization (MPO)	Ozone Non-Attainment Area (8 hour standard)	Particulate Matter (PM 2.5) Non-Attainment Area
Number of Counties Included	10 counties	13 counties	All of 13 counties; parts of 5 counties	20 counties	All of 20 counties; parts of 2 counties
Planning Responsibilities	ARC is the State designated Area Planning & Development Commission (APDC), it is assigned the responsibilities of an RC, one of 12 in the State. Every county in the state must be a member of an RC and pay membership dues. RCs facilitate intergovernment coordination and provide comprehensive planning assistance and other services to constituent jurisdictions. Prior to April 2004, this boundary was also the Atlanta MPO boundary.	The Clean Air Act requires that regional transportation plans help non-attainment areas achieve clean air standards. The ten counties within the RDC area, as well as three others, were designated as a 1 hour ozone nonattainment area. On 6/14/05, EPA determined that attainment had been reached; on 6/15/05, EPA officially withdrew the 1-hour regulations.	The 2000 census identified an expansion of the Atlanta urbanized area that encompassed portions of 19 counties (red). MPOs develop transportation plans for the current and future urbanized areas. ARC serves as the MPO for all or part of these 18 counties. A small portion of the Atlanta urbanized area falls within Hall County. By agreement, planning for that area is conducted by the Gainesville-Hall MPO.	In April 2004, EPA implemented a new 8-hour standard for ozone. ARC has coordinated since that time with GHMPO's planning efforts to demonstrate conformity for the entire non-attainment area. USDOT, in consultation with USEPA, has made conformity determinations for this nonattainment area on 12/21/04, 3/30/06, 10/10/07, 6/10/09 and 12/17/09.	EPA designated this nonattainment area in December 2004. In early 2006, ARC performed a technical analysis for the 20+ county nonattainment area which demonstrates conformity to PM 2.5 requirements. USDOT, in consultation with USEPA, has made conformity determinations for this nonattainment area on 3/30/06, 10/10/07, 6/10/09 and 12/17/09.